



Vol. 24 No 9

SAW NEWSLETTER

September 2008

MEETING
ETHEL Mac Leod HART SENIOR CENTER
915 27th STREET, SACRAMENTO, CA
(BETWEEN I & J STREETS)
September 2, 2008 7:00 pm

President's Message

We are winding down for the year 2008. September means summer is almost over and fall begins. Woodworkers will start opening their shops to do the neglected projects. Summertime was for BBQs, camping, vacations, and many fun family outings. Now that fall is on the horizon, woodworking is becoming a priority for many of our group.

We have many activities planned for this fall. One of the activities is the Fall Shop Tour. It will be along the Highway 50 Corridor. If you live along this corridor and would like to open your shop, please contact Clayton Nye or one of your board members. The tour is scheduled for the first Saturday after the October meeting. The date is Saturday, October 11. We will need 3 shops. Please, let us know as soon as possible.

Nancy Laudenslayer is retiring as the Newsletter editor. If you are interested in becoming the Newsletter Editor, please contact one of your board members. Nancy has graciously volunteered to train the prospective editor to all the duties associated with the job.

The speaker for the September General Meeting is Lance Gunnerson from Davis. He teaches woodworking at Holmes Junior High and Davis High schools.

The next contest we have is in October. It is the **BOX Contest**. At the September meeting it would be really nice if all members who have entered the contest in previous years would bring their **winning entries** for **Show and Tell**. This will show the members what type of boxes have won previously. So bring in what you still have. I will bring a couple of boxes that won several years ago. Also, we have 5 contests scheduled for next year. The

five are: Bird houses/feeders, Step Stools, Furniture, Clock, and Boxes. If you have any suggestions for any other contests, please contact a board member. There has been a suggestion for an open contest which would be any woodworking item. We are asking for suggestions to make the contests more appealing to the members.

At this writing, we have not been to the California State Fair. We have enough participants to cover the 6 days. We will be demonstrating scroll saw techniques and turning Freedom pens. Woodcraft has graciously loaned us a scroll saw, mini-lathe, and a Fein vacuum for dust collection. Woodcraft is providing the pen kits for the pens. We hope to make more than 35 pens (that is the amount we did last year). Higgins has donated over 500 board feet of 1x8 pine for us to use for the Fair demonstration and Toys for Tots program. Thank you Woodcraft and Higgins Lumber for your participation.

For your information, Higgins is moving and will be in their new facility by August 25th. Their new address is **1301 N Market St**. They are in the Northgate/ARCO Arena area. Further details to follow.

The Salvation Army has loaned us a container to store wood and Toys. The container is located at their North B street Facility. We have stored Maple/apple plywood and more than 500 board feet of the pine. This wood is to be used primarily for Toys for Tots projects. If anyone is interested in getting the wood for their projects (Toys for Tots), please contact me and I will make arrangements to meet you there. We have access to the container during

(Continued on page 3)

The SACRAMENTO AREA WOODWORKERS, also known as SAW, is an organization formed for the purpose of:

Sharing woodworking experiences, information, instructions, plans, books, tools and lumber sources, ideas in producing supplement income and sharing in discounts resulting from volume buying.

2008 SAW BOARD

*Voting board member

All Phone numbers are area code 916

President*	Floyd Gibson	
Vice President*	Rick McCusker	
Secretary*	Richard Lovvo	
Treasurer*	Sally Green	
Program Chairman*	Gary Foster	
Mbr at Large*	Tom Nelson	
Mbr at Large*	Charles Linn	
Editor*	Nancy Laudenslayer	
Past President*	Clayton Nye	

SAW Staff Members

Volunteer members who work hard to help make the club enjoyable and run smoothly.

Librarians	Bob Beckert, Jack Van Keuren, Norm Steinbach, Dick Lewis.
Toy Chairman	Bob Schieck and Andy Santos
Small Raffle	Doris Woods Marilyn Gibson
Large Raffle	Christopher De Loffi
Merchandise	Judy Wavers Hank Wavers
Badges	Allan Laudenslayer
Refreshments	Vikki Orman Bernard Orman
Web Master	Jason Beam

Contest Projects - **Your last chance** to apply your wood working talents and make a project to enter and win a prize for this year.

Make a BOX BOX BOX BOX BOX BOX

And dazzle the SAW members.

October	Box
---------	-----

CLASSIFIED ADS

SHOP TOOLS TO BE SOLD

These power tools must find new homes. Condition of all tools: Very Good to Excellent. A great chance to set up your shop or upgrade some of your tools.

Powermatic: 14" Bandsaw on roller base - \$250

Powermatic: 14" Drill Press on roller base - \$150

Powermatic: 1 1/2 HP, Dust collector, two 4" dust ports - \$200

Powermatic: 6" Jointer on roller stand. - \$200

JDS Air-Tech 2000, Mod. 350 dust filter - \$125

Call Bob Florida

Craftsman 10" table saw model 21805 -- \$70

10 in. Craftsman table saw with a folding collapsible stand. Right and left telescoping wings for 30 in. right and 18 in. left rip capacity.

Ryobi 9" Bandsaw - \$0

This special price to a new(er) member who doesn't have many tools yet. That is how I acquired it, so I offer at same price.

Contact: Andrew Silvester

MEMBERSHIP

For all renewing members the dues for SAW are \$30 per calendar year (No Prorated renewal). Additional dependent family members, residing in the same household of a fully paid member, shall pay 50% of annual dues. As a SAW member, you will enjoy the camaraderie of fellow woodworkers, discounts from local merchants, group buys on wood, and library privileges.

New Members will be prorated by month joined for the year.

Jan - Mar	\$30.00
Apr - Jun	\$22.50
Jul - Sept	\$15.00
Oct - Dec	\$7.50

No refunds will be given on membership dues.

Commercial Membership

Commercial memberships are available for \$50 per year. This membership includes yearly advertising in the newsletter. Ads are to be business card size and may be changed from month to month, if desired. Contact Treasurer Sally Green for more membership information.

Newsletter Items

Contributions to the newsletter must be sent to the Editor. Nancy Laudenslayer by the **20th of the month** for inclusion in the following month's newsletter.

(Continued from page 1) *President's Message*

business hours. Anyone making toys may also store their toys in the container. You can contact me or a board member for more information about the storage.

The Large Raffle item is a Freud 3 ¼ HP Plunge Router. This router is heavy duty. The router may be used as a hand-held router or mount it in a router table. So, buy your tickets early and often. This is the router that should last for a very long time. You may be the lucky winner. Good luck. There will be some very neat items at the Small Raffle. One of the prizes will be a "WOW" item. I wonder if Holly is going to get it. Maybe someone else will be lucky enough to win it and ace out Holly. Again, good luck to you all.

Finally, Clayton Nye is leading the nomination committee. If you would like to be on that committee, please contact Clayton. Nominations for SAW officers will be at the October general meeting and elections in November. If you want to run for an office, please contact Clayton.

See you all at the September meeting, Tuesday, September 2nd.

Floyd Gibson
President 2008

September Calendar

2nd	Tue. 7 - 9	General Meeting Ethel Hart Senior Center 915 27th Street Sacramento
6th	Sat. 10-1	Wood Projects SIG Floyd Gibson
11th	Thu. 7 - 9	Board Meeting Ethel Hart Senior Center 915 27th Street Sacramento
13th	Sat. 10 - 1	Scroll Saw SIG Richard Lewis
20th	Sat. 10-1	Furniture Projects SIG Gary Foster
27th	Sat. 10 - 1	Small Lathe Turning SIG Jason Beam
28th	Sun. 2 - 5	Novice SIG Rick and Holly Lovvo

LIBRARY

Books, videos, and magazines are available to members for one month at a time when checked out of the Library at the back the meeting room. Be sure to return the items at the next meeting.

New Books

Woodshop Jigs & Fixtures	Nagyszalancy
Projects for Woodworkers	Woodworkers Journal
Table Saw Magic	Toplin
Crafting Wood Logic Puzzles	Self
	(A big peoples book)
Basic Box Making	Stowe

Basic Box Making was donated by Debbie Probst to replace a lost book. Thank You Debbie.



Last month Bruce Buxton brought in his beautiful cabinet for show and tell. Unfortunately, I did not have his name. Made from white oak with a "box-tail" on each corner. The "box-tail" has a dovetail with a box joint cut into the "tail" portion of the dovetail. The sides have the dovetail of Wenge. The top and bottom has the dovetail of Padauk.

SIG and Class Information

A “**SIG**” (**Special Interest Group**) is a gathering of woodworkers at a member’s workshop to discuss and do projects related to the Group’s interest. Any SAW member or guest of a SAW member may just show up at the meeting.

A “**Class**” is a predefined project and you must sign-up to take the class. It is only open to a limited number of SAW members.

Wood Projects SIG

Contact Person: Floyd Gibson or Steven Hitchens

The Wood Projects meeting was held at Steve’s Shop on 2nd Aug, We had two meeting subjects , First Tom Nelson Demo a low cost\$ HVLP Spray Gun with water base Finishes. The second subject was a Demo by Steve on making Box Joints with a Jig for the Router Table. Then Don Robinson explained the differences in Quality of Router Bits and showing the different types he uses.

The Next Meeting will be at Floyd’s Shop on Saturday Sept 6th, for the next three months Sept-Oct-Nov the Subject will be on applying Finishes to your Project. The last and most important step you make is applying a good Finish. Floyd will show in the next meeting how to apply these Finishes with Brush, Wiping methods and mixing dye with your polyurethane

Scroll Saw SIG

Contact person: Buzz Arnould and Roberta Taylor

The September Scroll Saw SIG will be on the 13th, 10am to 1pm. This will give us a chance to visit Richard Lewis’s new shop.

Roberta Taylor will bring in some of the puzzles she won ribbons for at the State Fair. She will bring patterns and discuss finishing tips.

Furniture Projects SIG

Contact Person: Gary Foster

The September open meeting subject will be the Fundamental use of SHELLAC. We will discuss and demonstrate French polish, "padding on", and the use of different types to get different colors and effects. We will also include the use of colored stains and the COLOR WHEEL to get a desired effect. We may include other hand applied finishes if time permits. We would love to have any help on any of the subjects.

The October meeting subject will be the making of two types of wooden hand planes and a wooden spook-shave. Buy your blades and wood now and we will get you started on making your own plane at the October meeting. Talk to Paul Verlinde, Tom Nelson, or Gary about what blades and wood to buy.

Small Lathe Turning SIG

Contact Person: Tom Taylor or Jason Beam

The August Small Lathe Turning SIG was held at Tom and Roberta Taylor’s shop. Tom demonstrated a sanding and wood polishing system for flat work on the lathe. Floyd Gibson brought pen kits and wood blanks in preparation for turning freedom pens at the state fair. Nine members cut, drilled and glued pen blanks for the state fair demo. The next Small Lathe Turning SIG on September, 27th 2008 will be held at Jason Beam’s new shop. He will be introducing a new class of Turning 101. Be sure to attend this SIG as Jason is an excellent instructor and his new shop is a must see.

Novice SIG

Contact person: Allan Laudenslayer or Jack Duran

The September 28th novice SIG will be covering planer setup, since we spent the entire session in July on the jointer. The location of the August 24 will be at Rick and Holly Lovvo’s shop. If you have a planer that needs alignment or adjustment, this is the SIG that you need to be at.

The October 26th SIG will be covering table saw setup and alignment, and some useful jigs that you can build to make your table saw more productive. The October SIG will be at Jack Duran’s Shop in Roseville. We will be talking about and showing various accessories and due some tuning up of Jack’s Delta saw.

Toys for Tots

Parts for cars/trucks are available on request. Since I don't have a pickup to carry all items, I'll bring in only those items requested. Please call or e-mail me what you need. Andy Santos.

Wheels available:	Wheels with tread:	Miscellaneous items:
640 of 1 1/2" 80 of 1 1/4 " 300 of the 1'	36 of 2" dual wheel w/o axel 60 of 1 1/2 " single wheel 400 1" single wheel	Dowls 1 1/4 " diameter x 5 3/8" Little people 7/8" diameter x 2 3/8" Drums 1 1/8" diameter x 1 5/8" Milk Cans 7/8" diameter x 1 3/4" Caps 3/4" diameter x 5/8" Plugs 1" diameter Cams 1 1/4" diameter



Lloyd Gavin brought me the pictures of the two planter boxes and the wheel barrel he made to share with us.

Wood Projects SIG



Don Robinson explaining the differences in Quality of Router Bits and shows the different types he uses.



Tom Nelson demonstrated the use of his HVLP Spray Gun with water based finishes. Holly Lovvo, Joe Trevino, and Jason Beam watch and learn the correct technique.

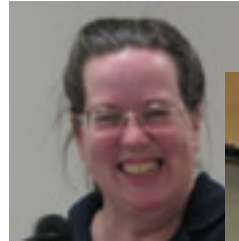


Left to Right: Don Robinson, Paul Verlinde, Joe Trevino, Tom Nelson, Jason Beam (back of head)

Clock Contest and General Meeting



Ralph Desmond won 1st prize for his beautiful Oak



Holly Lovvo tied for 2nd place with her scroll saw clock.



Tom Taylor tied for 2nd place with his amboyna burl wood clock. The amboyna wood is spectacular.



Bob Beckett took 3rd place with his scroll saw clock. But, can the clock tick to the beat of the music?



Bruce Buxton showed off his Charging Station. It certainly is nicer than the usual black charging station.



Andy Failla brought in his Red Baron Plane. It is a very special plane.



David Holtz is busy developing a turtle pull toy. He explained the making of the shell. It will be a great pull toy.



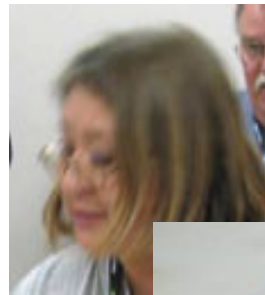
Sally Green organized her draw with her custom make dividers.



Abe Low did a test demonstrating the strength of original Tite Bond glue. He passed it around and nobody was able to brake the joint.



Richard Fuller showed off his turned bowl.



Roberta Taylor is busy making lovely wine bottle holders. If you attended her scroll saw SIG you had a chance to make one of your own.



Sacramento Area Woodworkers would like to thank the business's that support our club and our woodworking endeavors.

WOODCRAFT®
Your Most Complete Woodworking Store!

- Hand & Power Tools - Carving Tools & Chisels - Hardware - Routers & Accessories
- Sanding & Scraping - Woodboring Tools - Finishing Supplies - Hardwoods & Exotics
- Planes - Woodburning - Saws - Shop Accessories - Safety Equipment - Workbenches
- Marking & Measuring - Cabinet Making Supplies - Woodturning - Vises & Clamps
- Sharpening Supplies - Power Tool Accessories - Project Kits & Supplies
- Files & Rasps - Picture Framing Tools - Clock Supplies - Books & Videos - Classes

Riverwood Plaza - 9545 Folsom Blvd. - Sacramento, CA 95827
 Phone: 916-362-9664

Hrs: M-T-W-F: 9AM - 7PM, Th: 9AM - 9PM, Sat: 9AM - 6PM, Sun: 12PM - 5PM

MITERSET
www.miterset.com
 Patent Pending
Proudly made in America
 "COMBINE WITH YOUR MITER GAUGE: CUT A PERFECT MITER"
 Richard L. Pattee, Inventor
miterset@comcast.net

Click link above to access MiterSet website.



3030 W. Capitol Ave. W. Sacramento, 371-6858
 SAW Members Discount 5% off all power tools
 10% off all accessories, glue, sandpaper, etc.
 Discount doesn't apply to sale items
 Please show your SAW Membership card

Turners ■ WOODWORKERS ■ Carvers

Looking for that special wood to complete your project?

Will Call Hours
 Mon-Fri
 7am - 4:30pm

"HIGGINS HAS IT!"

We offer a variety
 of specialty and
 exotic hardwoods



Call Toll Free 1-800-241-1883

1122 Joellis Way, Sacramento CA Tel: 916-927-2727 Fax: 916-921-1842
 Visit us on the internet at www.higlum.com

DOUG PETERSEN PETERSEN TRUCKING
 (916) 454-5486 ENTERPRISES AND SER-
 VICES

Hazardous Tree and Branch Removal
Trimming·Topping·Clearing·Demolition·Stump Grinding
Mobile Milling, Lift Truck, Dump Truck and flatbed Work

Cont. Lic. 685235
 P.O. Box 163 • Penryn, CA 95663

AURA HARDWOOD LUMBER, INC.

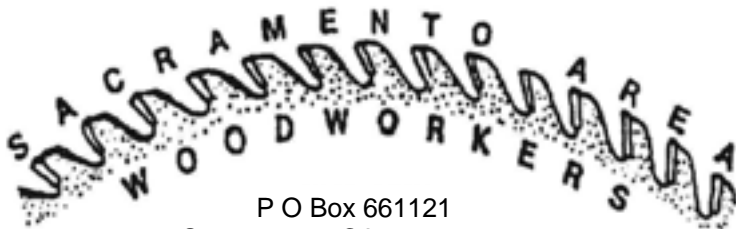


2477 MERCANTILE DR.
 RANCHO CORDOVA, CA

FOR ALL YOUR LUMBER
 AND PLYWOOD NEEDS

(916) 638-7800

Mon-Fri: 8:00 - 4:30



P O Box 661121
 Sacramento, CA 95866-1121